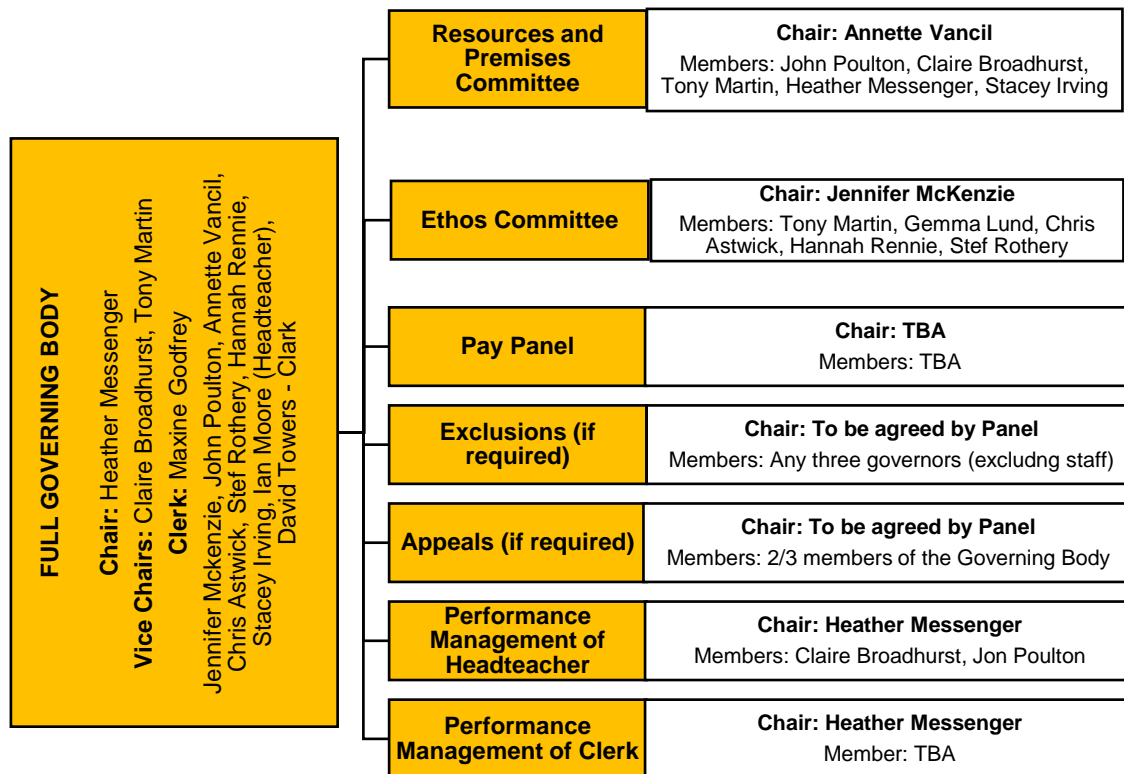




# Ann Edwards C of E Primary School

'Learning and Achieving Together in a Caring Community'  
 "Do to others what you want them to do to you" - Matthew 7:12

## ANN EDWARDS PRIMARY SCHOOL GOVERNING BODY STRUCTURE, MEMBERSHIP & ROLES 2020-21



GOVERNORS ROLES	
<b>SEND Governor</b>	Claire Broadhurst
<b>Safeguarding Governor</b>	Claire Broadhurst
<b>Health and Safety Governor</b>	John Poulton
<b>Local Authority Governor</b>	TBA

LINK GOVERNORS	
<b>ICT</b>	Annette Vancil
<b>RE</b>	Jennifer McKenzie
<b>MFL</b>	Stacy Irving
<b>Science</b>	Jon Poulton
<b>History</b>	Tony Martin
<b>Geography</b>	
<b>PE</b>	Heather Messenger
<b>Gifted &amp; Talented</b>	Claire Broadhurst
<b>Maths</b>	Tony Martin
<b>Literacy</b>	Claire Broadhurst
<b>EYFS</b>	Hannah Rennie
<b>Music</b>	Chris Astwick
<b>PHSE</b>	Stacey Irving
<b>Art</b>	Chris Astwick

The governing body consists of ? Governors: co-opted, parent, 1 x Local Authority, 1 staff member and the Head Teacher.  
 There are currently? Vacancies for co-opted governor